

Netcomm NF4V Modem Router Setup Guide (UFB)

Bigpipe Setup Guide for Netcomm NF4V Modem Router (UFB)



Setting up for Bigpipe

UFB Starter, Pro, Elite

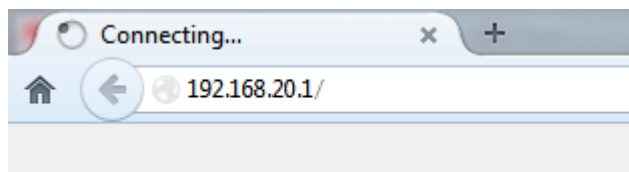
To install the router:

1. Connect Router to power
2. Connect the WAN port on the router to port 1 on your ONT with an Ethernet cable
3. Connect Router to computer (i.e.: PC or laptop)

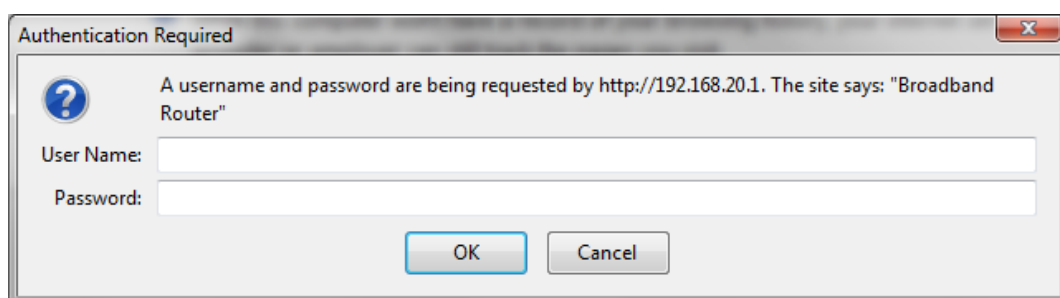
To set the router up for either the *UFB Starter, Pro or*

Elite plan:

1. Launch your Web Browser (e.g.: Internet Explorer, Chrome or Firefox).
2. Access the modem settings:
 1. Type *192.168.20.1* into the address bar.

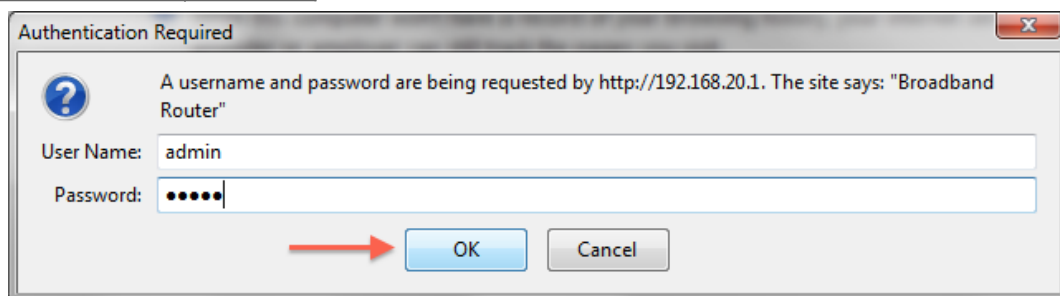


2. Press the ENTER key.
The login screen displays.




3. Login to the modem page:

Username	<i>admin</i>
Password	<i>admin</i>



If that Username and Password do not work you should RESET the modem to factory settings (see the instructions below).

4. Click the **Log In** button.
The modem's Dashboard screen displays.


NetCommWireless

NF4V

Device Info
Basic Setup
Quick Setup
Advanced Setup
Wireless
Voice
Diagnostics
Management

Device Info

Manufacturer:	NetComm Wireless
Product Class:	NF4V
Serial Number:	131 <input type="text"/>
Build Timestamp:	201309161742
Software Version:	GURNV5.OT132A-8-NC.AU-R5B014.EN
Bootloader (CFE) Version:	1.0.38-114.170
DSL PHY and Driver Version:	A2pv6F039d.d24l
Wireless Driver Version:	6.30.163.23.cpe4.12L
Voice Service Version:	V2.4
Uptime:	0D 0H 2M 56S

This information reflects the current status of your WAN connection.

Line Rate - Upstream (Kbps):	696
Line Rate - Downstream (Kbps):	19163
LAN IPv4 Address:	192.168.20.1
Default Gateway:	
Primary DNS Server:	0.0.0.0
Secondary DNS Server:	0.0.0.0
LAN IPv6 Address:	
Default IPv6 Gateway:	
Date/Time:	Sat Nov 19 00:02:47 2011

3. Configure the modem for Bigpipe:

1. From the menu on the left, click **Advanced Setup**.

Broadband Router
192.168.20.1


NetCommWireless

NF4V

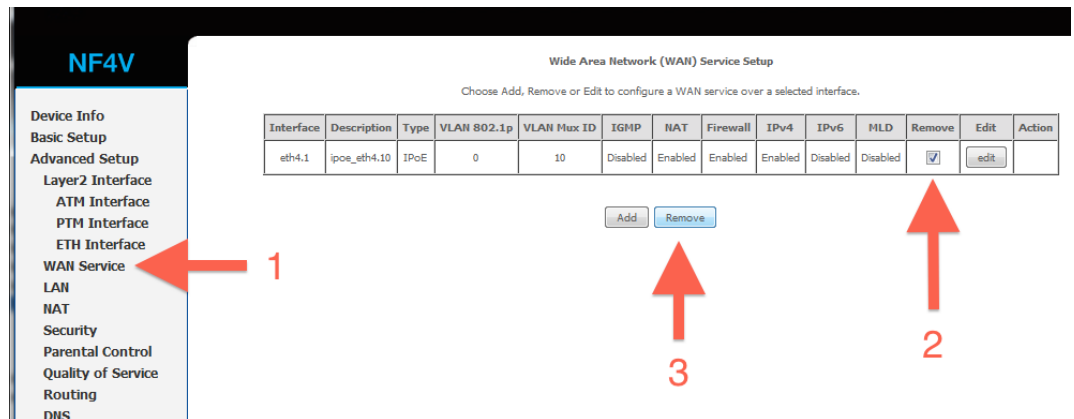
Device Info
Basic Setup
Advanced Setup
Layer2 Interface
WAN Service



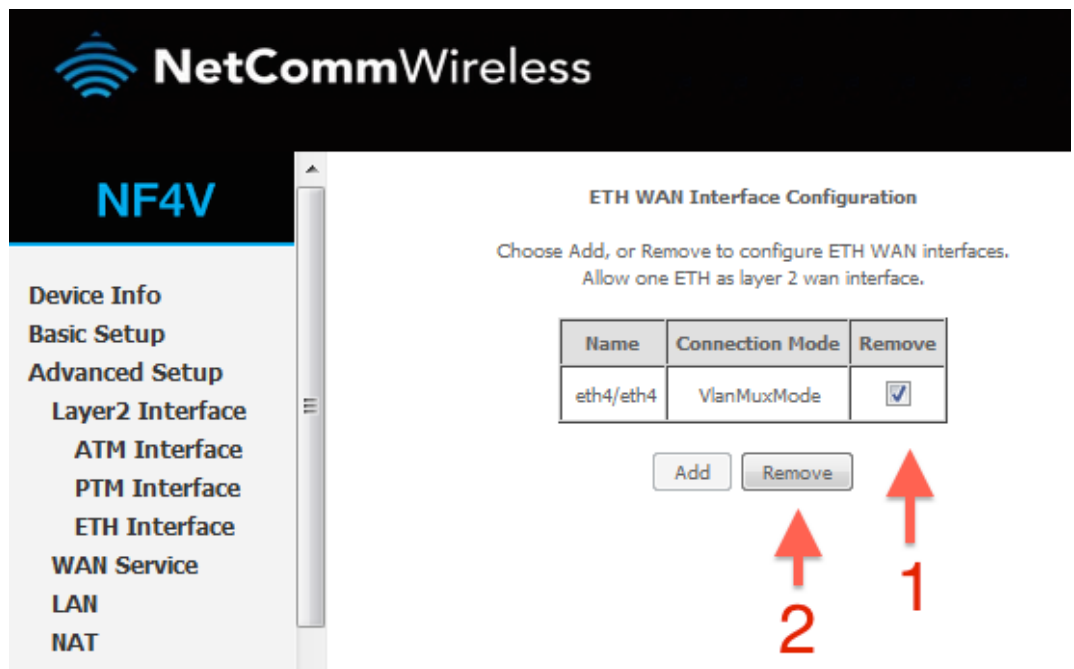
2. Remove all old WAN services if there are any present.

1. Click on WAN service.

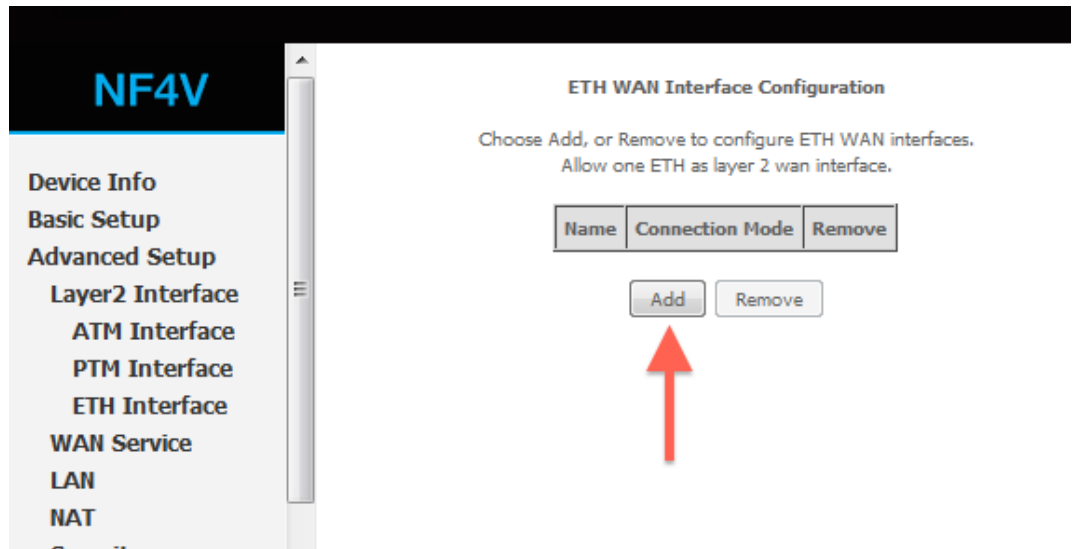
2. Tick each interface that is present.
3. Click remove.



3. Check to see that there are no old ETH interfaces.
If there are, remove them with the steps below:
 1. Click ETH Interface
 2. Tick the remove box(es)
 3. Click remove.

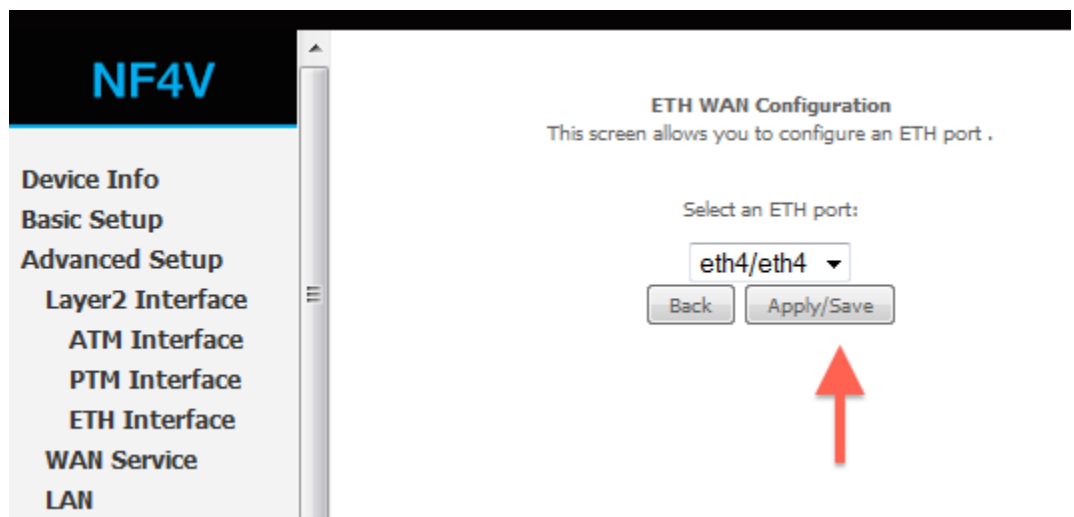


4. Add your new ETH interface.
 1. Click ETH Interface.
 2. Click the Add button under the ETH interface.



5. Enter the required settings for your new ETH interface.

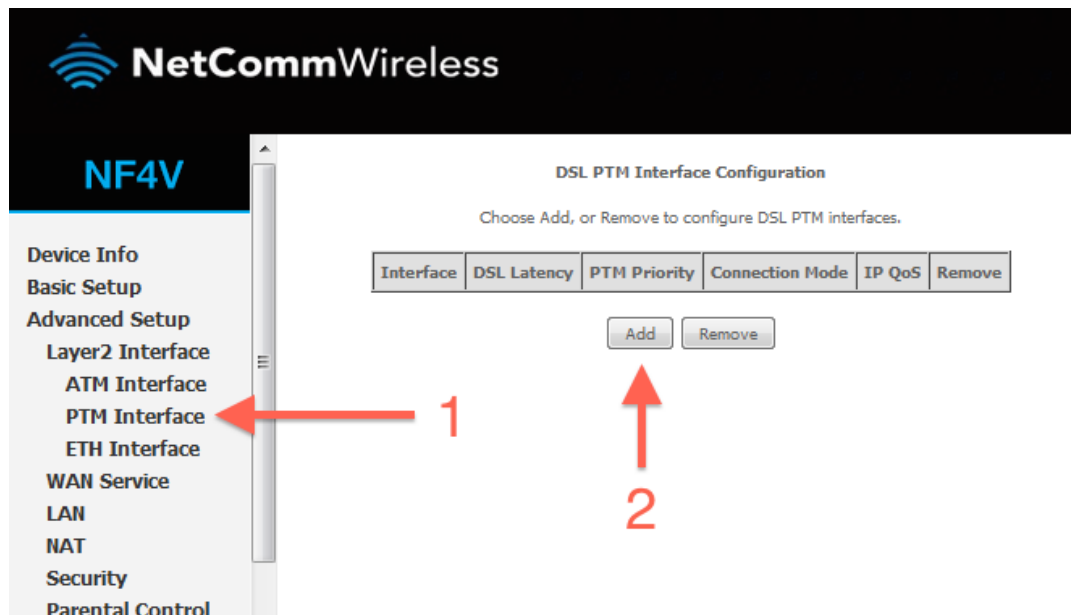
1. Select eth4/eth4.2. Click Apply/Save.



6. Add a new WAN service.

1. Click WAN service

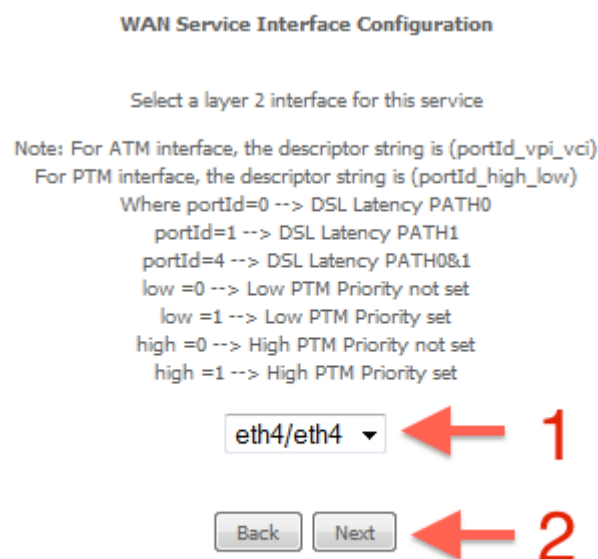
2. Click Add



7. Select your new ETH interface.

1. Select eth4/eth4.

2. Click Next.

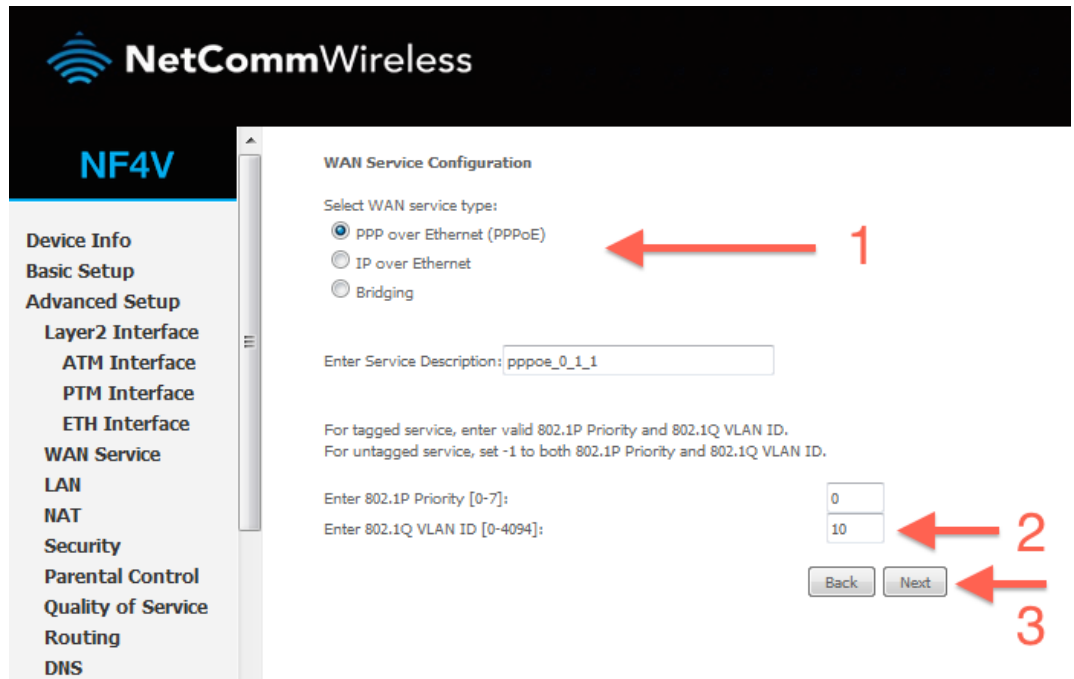


8. Enter a service name if desired.

1. Select PPP over Ethernet.

2. Enter Priority -1 and VLAN ID -1.

3. Change the service name if desired, or leave on the default and click Next.



NetCommWireless

NF4V

Device Info
Basic Setup
Advanced Setup
 Layer2 Interface
 ATM Interface
 PTM Interface
 ETH Interface
WAN Service
 LAN
 NAT
 Security
 Parental Control
 Quality of Service
 Routing
 DNS

WAN Service Configuration

Select WAN service type:

- ☒ PPP over Ethernet (PPPoE) ← 1
- ☐ IP over Ethernet
- ☐ Bridging

Enter Service Description: pppoe_0_1_1

For tagged service, enter valid 802.1P Priority and 802.1Q VLAN ID.
 For untagged service, set -1 to both 802.1P Priority and 802.1Q VLAN ID.

Enter 802.1P Priority [0-7]: 0
 Enter 802.1Q VLAN ID [0-4094]: 10 ← 2

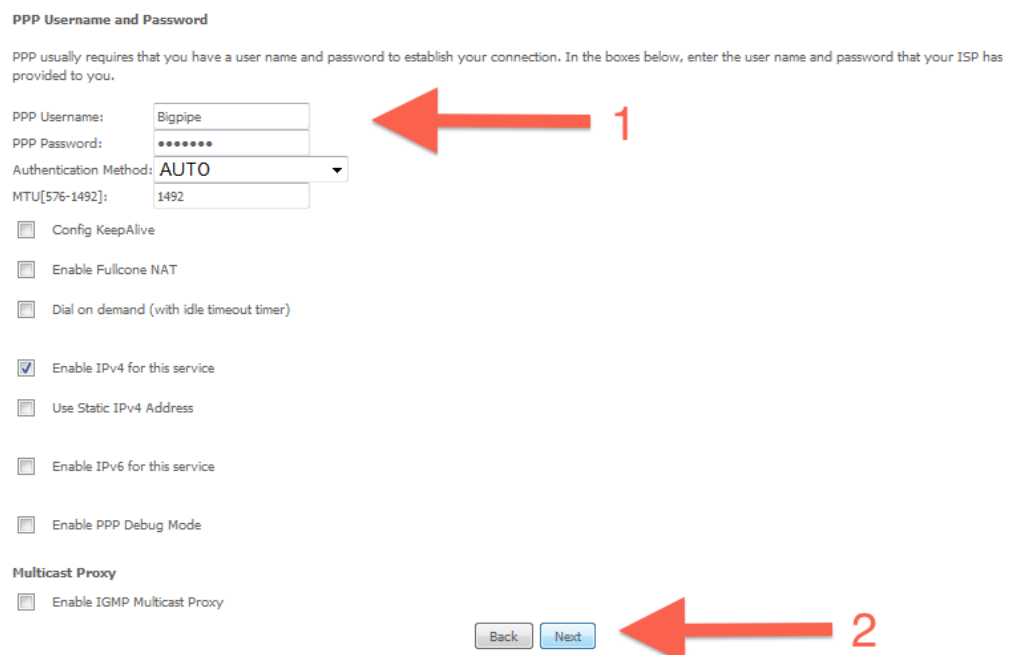
Back Next ← 3

9. Enter a PPP username and password.

1. Enter a PPP username and password. These can be anything you like, but cannot contain special characters or be left blank.

Set authentication method to AUTO and MTU to 1492.

2. Click Next.



PPP Username and Password

PPP usually requires that you have a user name and password to establish your connection. In the boxes below, enter the user name and password that your ISP has provided to you.

PPP Username: Bigpipe ← 1
 PPP Password: ••••••
 Authentication Method: AUTO
 MTU[576-1492]: 1492

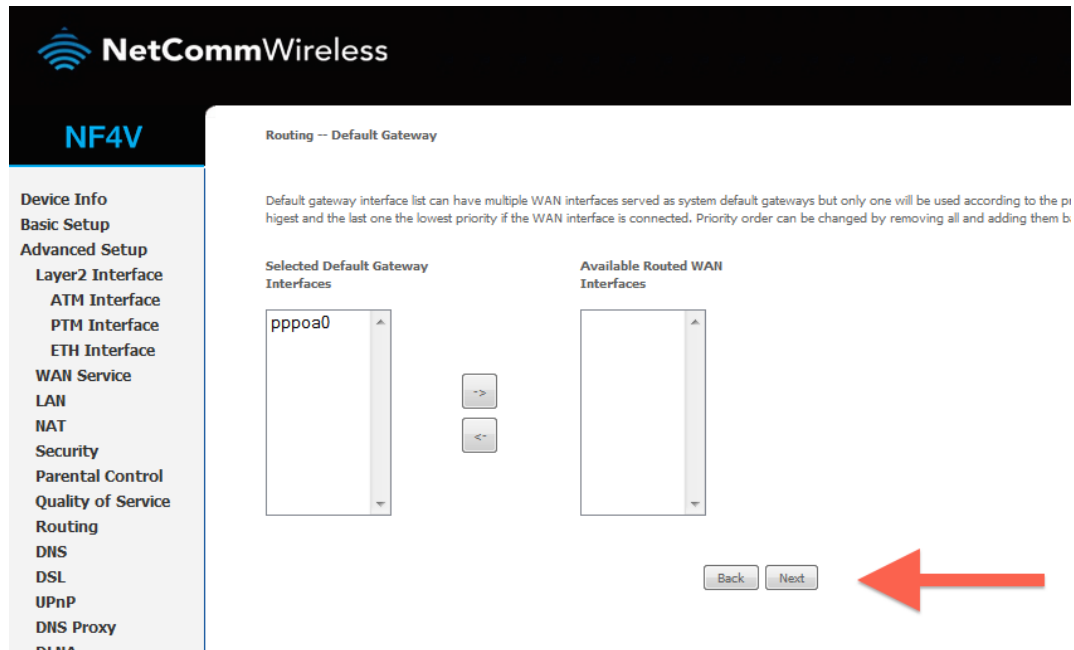
☐ Config KeepAlive
☐ Enable Fullcone NAT
☐ Dial on demand (with idle timeout timer)

☒ Enable IPv4 for this service
☐ Use Static IPv4 Address
☐ Enable IPv6 for this service
☐ Enable PPP Debug Mode

Multicast Proxy
☐ Enable IGMP Multicast Proxy

Back Next ← 2

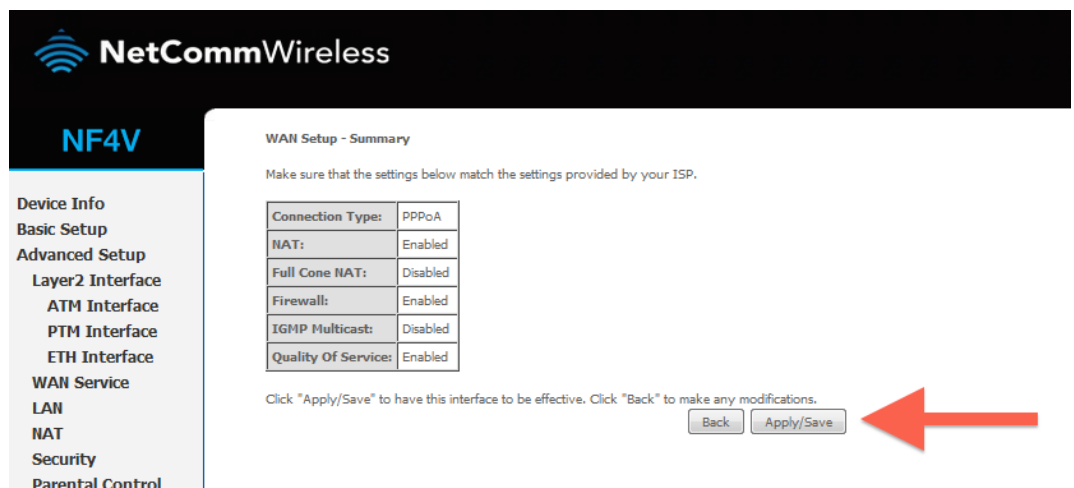
10. Ensure ppp0.1 is in the left column, and click Next.



11. Ensure ppp0.1 is in the left column, and click Next.

Click **Save/Reboot**

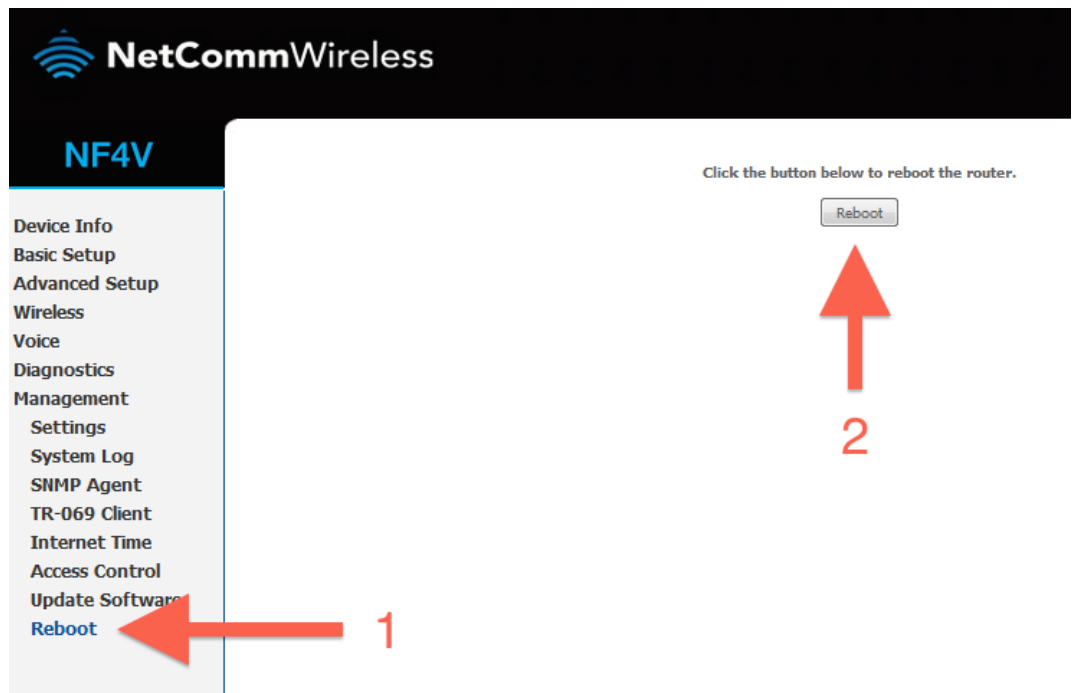
12. Click Apply/Save.



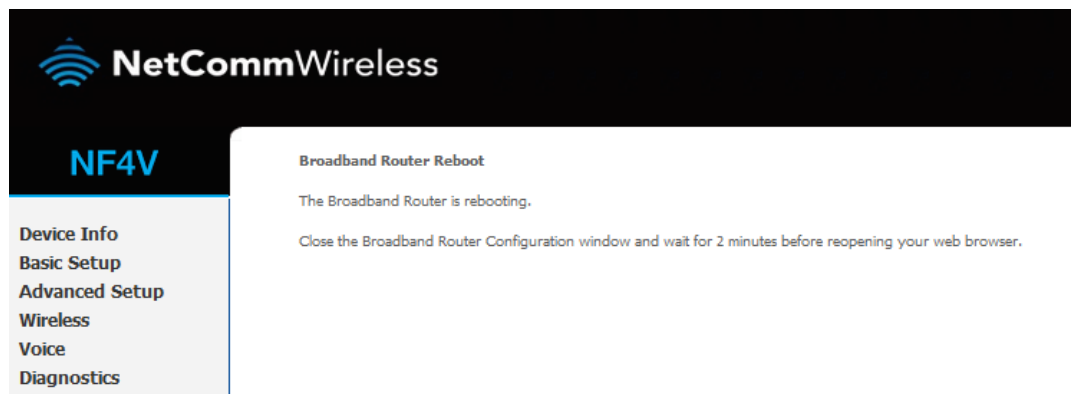
13. Reboot your router.

1. Click Reboot in the bottom left menu.

2. Click the reboot button.



14. Your router should now restart.



15. Your router is now configured for Bigpipe UFB. After your router has rebooted you should be able to browse the internet.

Disclaimer: Our modem guides are just for setting up your Bigpipe connection with these specific models of modem. If something goes wrong during setup we recommend doing a factory reset of your modem and – if necessary – getting in touch with the Bigpipe support team. These guides don't cover everything your modem can do. If you want to get more in-depth, we recommend starting with Googling your modem model number.

Resetting the Router

If something goes wrong with your router, you can reset the

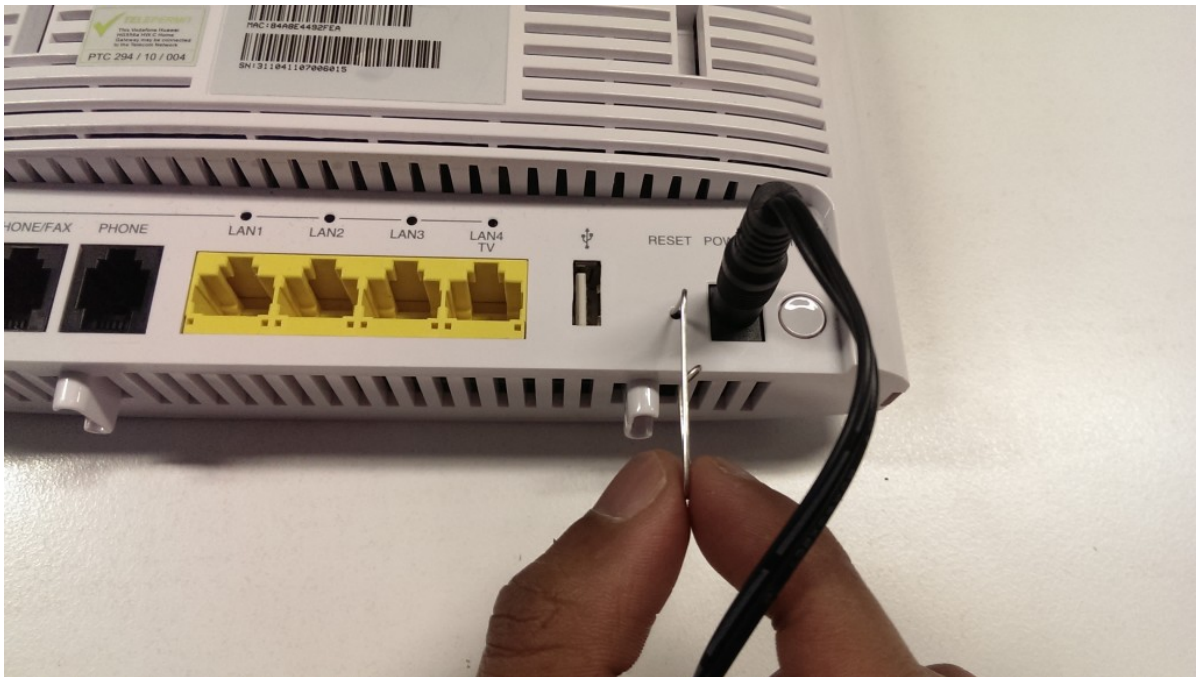
device to the default Factory settings. You will lose any of your customised settings.

To reset the modem:

1. Check it is on (i.e.: plugged in with one or more lights lit).

You cannot reset the modem if it is off.

2. Use something, like a paperclip, to press and hold the **Factory Reset** button, which is in between the plug and the USB port.



3. Hold for 5 seconds.
4. Release the **Factory Reset** button.
5. After a few seconds, the modem will start to reset.
The modem will have reset itself to its original factory settings. Any customised settings will have been lost.