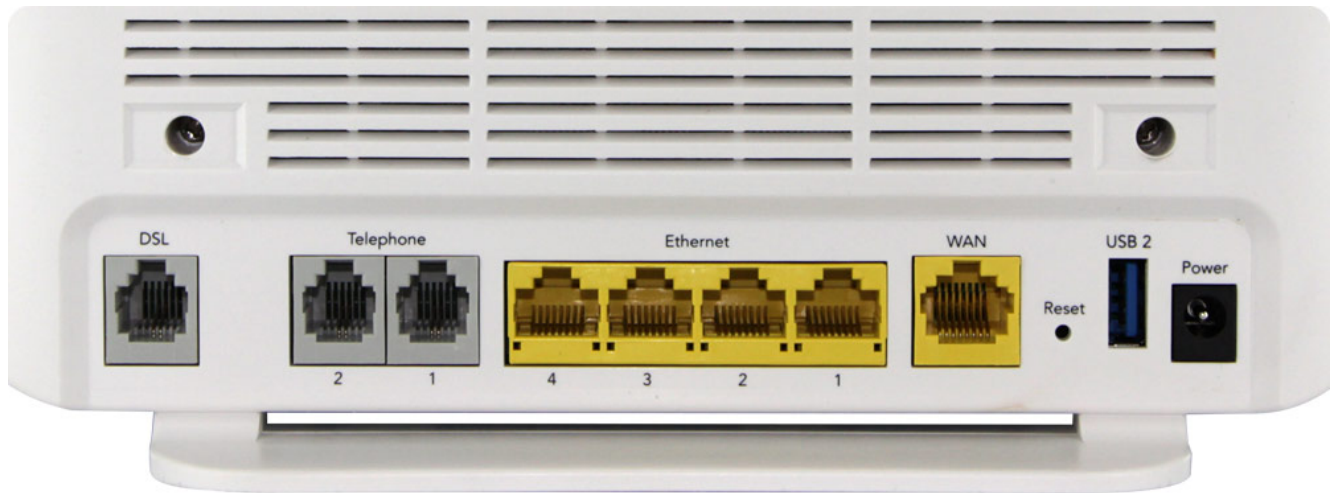


Netcomm NF4V Modem Router Setup Guide (ADSL)

Bigpipe Setup Guide for Netcomm NF4V Modem Router (ADSL)



This section details how to plug the modem in – to both power and the internet. Before you start you will need to identify where DSL comes into your home. If you have previously had broadband, continue to use the same outlet. If you're in a new home, look for an outlet labelled ADSL. If you cannot find a labelled outlet try every outlet in your house, or ask your landlord or the previous occupant.



To install the router:

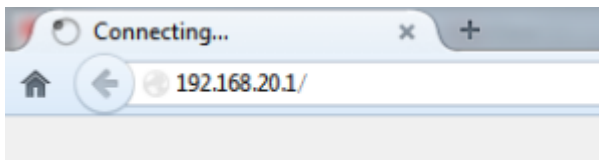
1. Connect Router to power
2. Connect the DSL port on the router to a jackpoint on the wall
3. Connect Router to computer (i.e.: PC or laptop)

Setting up for Bigpipe

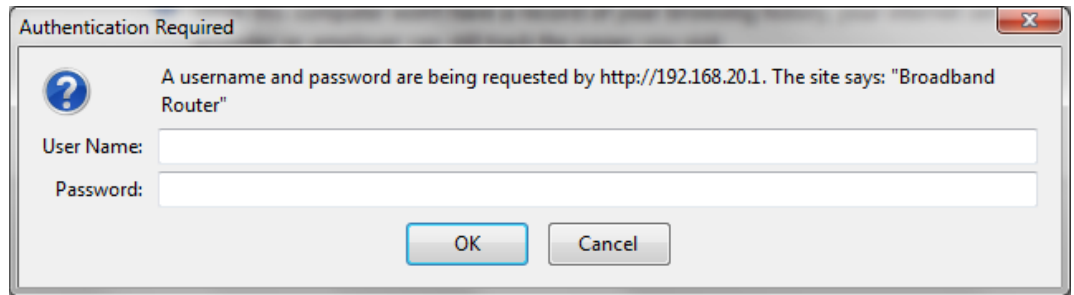
Basic and Fast – ADSL

To set the modem up for either the *Basic* or *Fast* plan:

1. Launch your Web Browser (e.g.: Internet Explorer, Chrome or Firefox).
2. Access the modem settings:

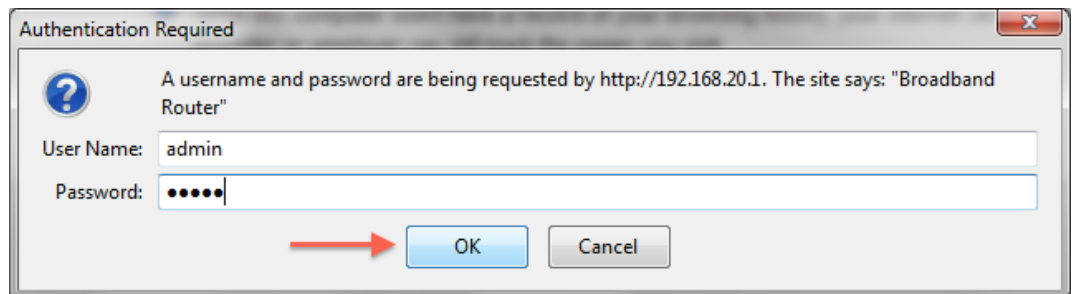


1. Type *192.168.20.1* into the address bar.
2. Press the ENTER key.
The login screen displays.



3. Login to the modem page:


Username	<i>admin</i>
Password	<i>admin</i>



If that Username and Password do not work you should RESET the modem to factory settings (see the instructions below).

4. Click the **Log In** button.

The modem's Dashboard screen displays.


NetCommWireless

NF4V

Device Info
Basic Setup
Quick Setup
Advanced Setup
Wireless
Voice
Diagnostics
Management

Device Info

Manufacturer:	NetComm Wireless
Product Class:	NF4V
Serial Number:	131 <input type="text"/>
Build Timestamp:	201309161742
Software Version:	GURNV5.OT132A-8-NC.AU-R5B014.EN
Bootloader (CFE) Version:	1.0.38-114.170
DSL PHY and Driver Version:	A2pv6F039d.d24l
Wireless Driver Version:	6.30.163.23.cpe4.12L
Voice Service Version:	V2.4
Uptime:	0D 0H 2M 56S

This information reflects the current status of your WAN connection.

Line Rate - Upstream (Kbps):	696
Line Rate - Downstream (Kbps):	19163
LAN IPv4 Address:	192.168.20.1
Default Gateway:	
Primary DNS Server:	0.0.0.0
Secondary DNS Server:	0.0.0.0
LAN IPv6 Address:	
Default IPv6 Gateway:	
Date/Time:	Sat Nov 19 00:02:47 2011

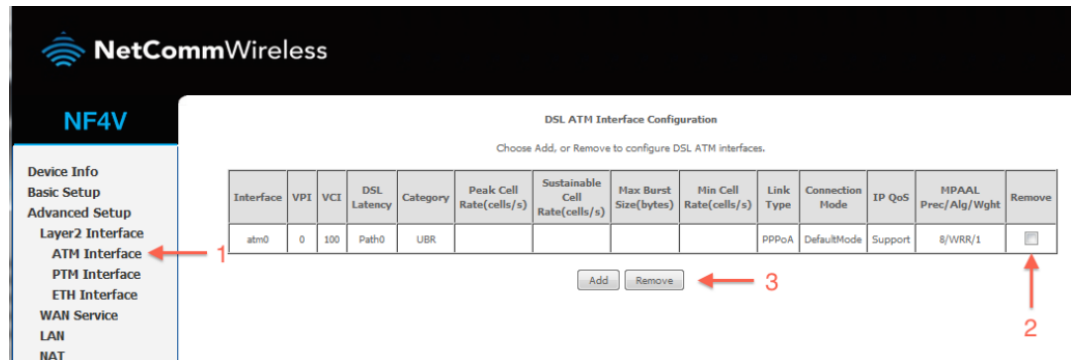
3. Configure the modem for Bigpipe:

1. From the menu on the left, click **Advanced Setup**.

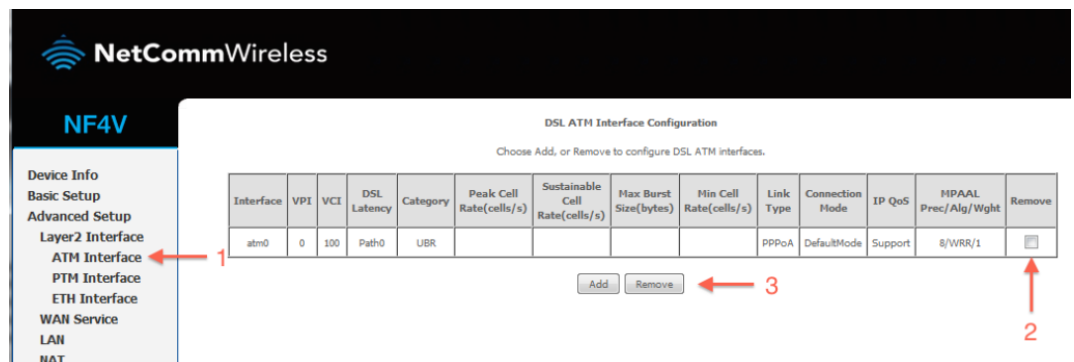


2. Remove all old WAN services if there are any present.

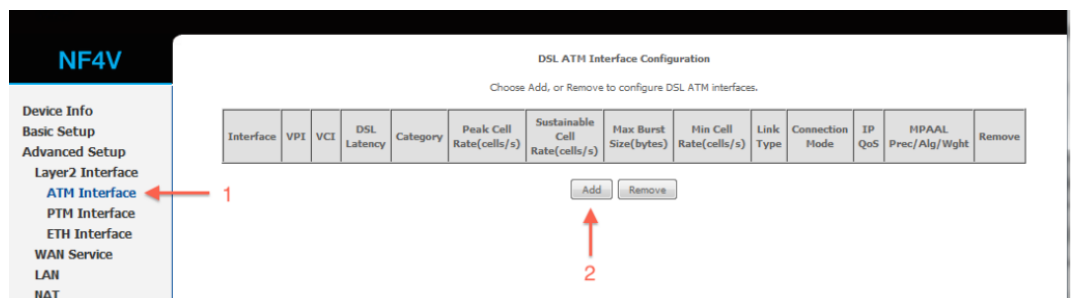
1. Click on WAN service.
2. Tick each interface that is present.
3. Click remove.



3. Check to see that there are no old ATM interfaces. If there are, remove them with the steps below:
 1. Click ATM Interface
 2. Tick the remove box(es)
 3. Click remove.



4. Add your new ATM interface.
 1. Click ATM Interface.
 2. Click the Add button under the ATM interface.



5. Enter the required settings for your new ATM interface.

1. Enter 0 for VPI and 100 for VCI
2. Select PPPoA
3. Select VC/MUX and UBR Without PCR.
4. Click Apply/Save.

NetCommWireless

NF4V

Device Info
Basic Setup
Advanced Setup
 Layer2 Interface
 ATM Interface
 PTM Interface
 ETH Interface
 WAN Service
 LAN
 NAT
 Security
 Parental Control
 Quality of Service
 Routing
 DNS
 DSL
 UPnP
 DNS Proxy
 DLNA
 Packet Acceleration
 Storage Service
 Interface Grouping
 IP Tunnel
 IPSec
 Certificate
 Power Management
 Multicast
 Wireless
 Voice
 Diagnostics
 Management

ATM PVC Configuration

This screen allows you to configure a ATM PVC.

VPI: 0 [0-255] ← 1

VCI: 100 [32-65535]

Select DSL Latency

☒ Path0 (Fast)

☐ Path1 (Interleaved)

Select DSL Link Type (EoA is for PPPoE, IPoE, and Bridge.)

☐ EoA

☒ PPPoA ← 2

☐ IPoA

Encapsulation Mode: VC/MUX ← 3

Service Category: UBR Without PCR

Minimum Cell Rate: -1 [cells/s] (-1 indicates no shaping)

Select Scheduler for Queues of Equal Precedence as the Default Queue

☒ Weighted Round Robin

☐ Weighted Fair Queuing

Default Queue Weight: 1 [1-63]

Default Queue Precedence: 8 [1-8] (lower value, higher priority)

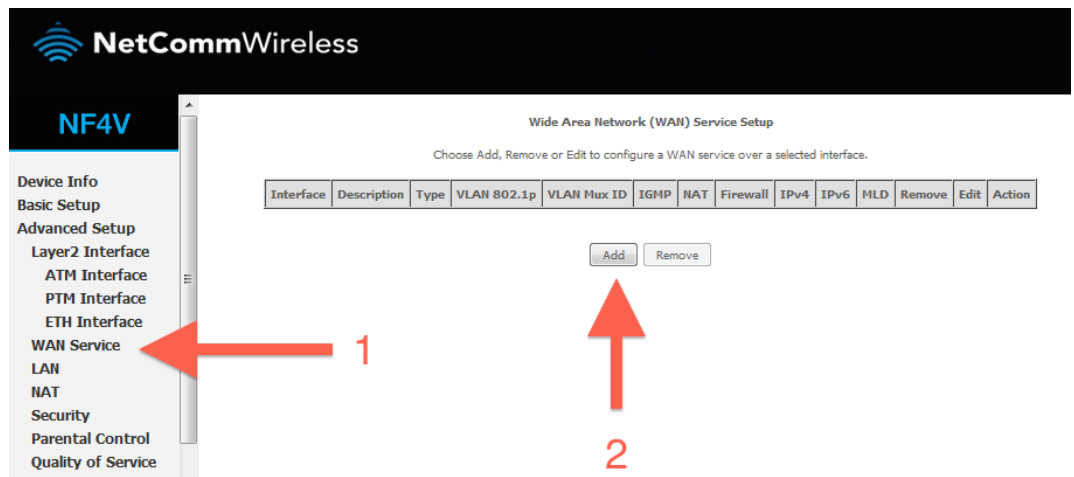
VC WRR Weight: 1 [1-63]

VC Precedence: 8 [1-8] (lower value, higher priority)

Note: VC scheduling will be SP among unequal precedence VC's and WRR among equal precedence VC's.
For single queue VC, the default queue precedence and weight will be used for arbitration.
For multi-queue VC, its VC precedence and weight will be used for arbitration.

Back Apply/Save ← 4

6. Add a new WAN service.
1. Click WAN service
 2. Click Add



7. Select your new ATM interface.

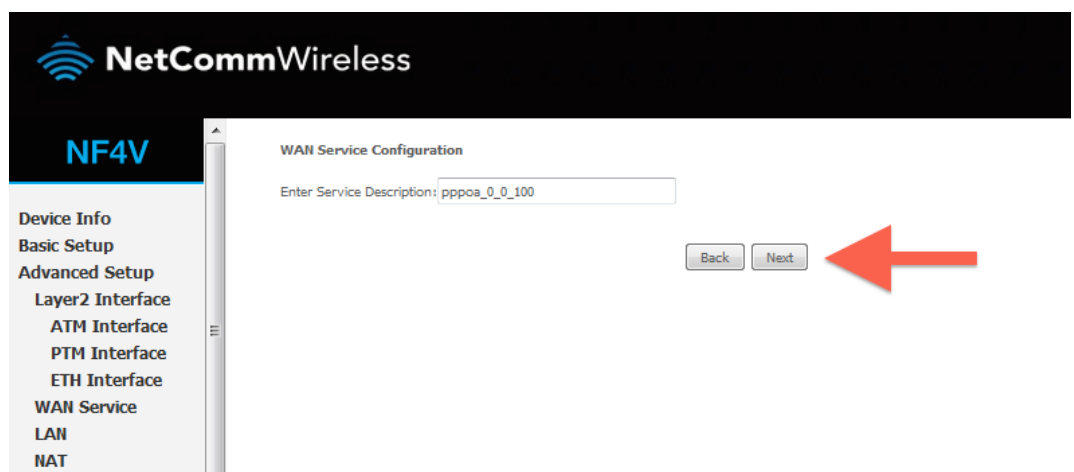
1. Select atm0\(\0_0_100).

2. Click Next.



8. Enter a service name if desired.

Change the service name if desired, or leave on the default and click **Next**.



9. Enter a PPP username and password.

1. Enter a PPP username and password. These can be anything you like, but cannot contain special characters or be left blank.

Set authentication method to AUTO and MTU to 1492.

2. Click Next.



10. Ensure PPPoa0 is in the left column, and click Next.

PPP Username and Password

PPP usually requires that you have a user name and password to establish your connection. In the boxes below, enter the user name and password that your ISP has provided to you.

PPP Username:
PPP Password:
Authentication Method:
MTU[576-1492]:



- ☐ Config KeepAlive
- ☐ Enable Fullcone NAT
- ☐ Dial on demand (with idle timeout timer)

- ☒ Enable IPv4 for this service
- ☐ Use Static IPv4 Address
- ☐ Enable IPv6 for this service
- ☐ Enable PPP Debug Mode

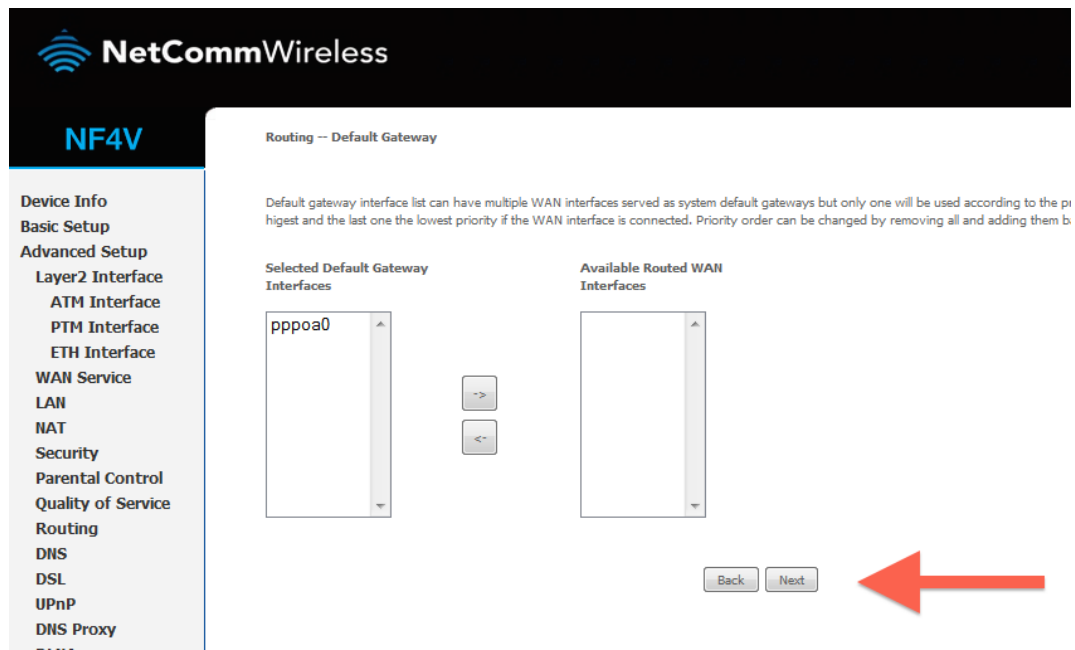
Multicast Proxy

- ☐ Enable IGMP Multicast Proxy



11. Ensure PPPoa0 is in the left column, and click Next.

Click **Save/Reboot**



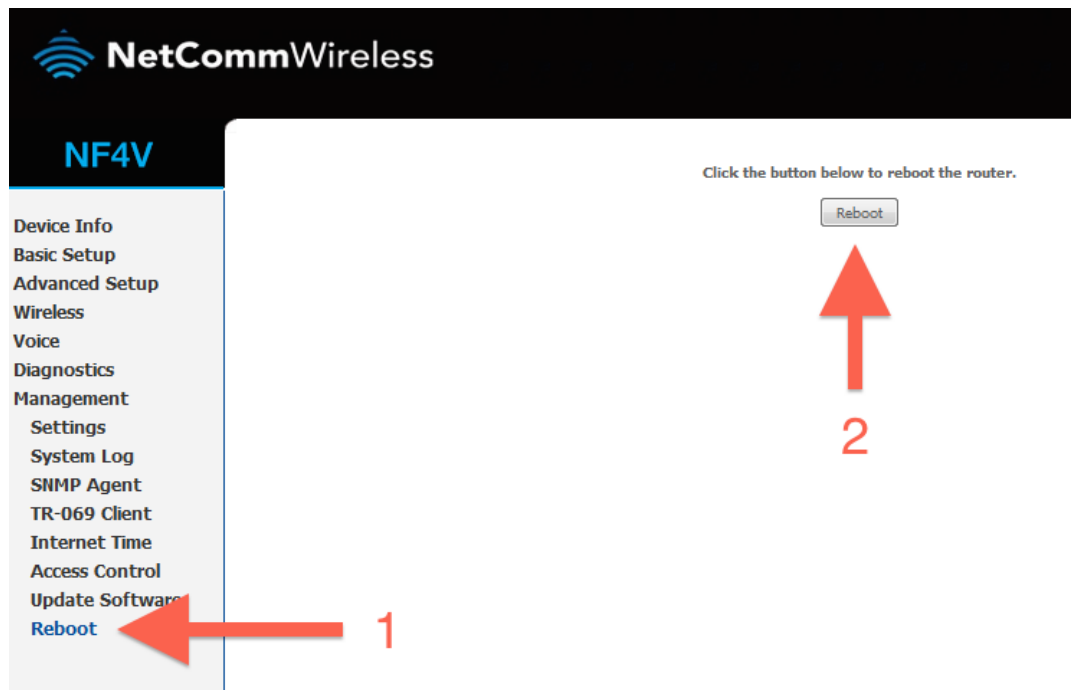
12. Click Apply/Save.



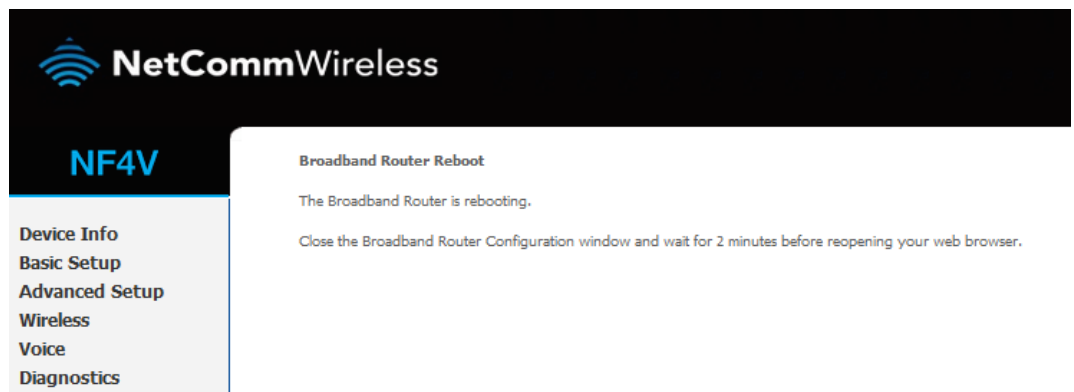
13. Reboot your router.

1. Click Reboot in the bottom left menu.

2. Click the reboot button.



14. Your router should now restart.



15. Your router is now configured for Bigpipe ADSL. After your router has rebooted you should be able to browse the internet.

Disclaimer: Our modem guides are just for setting up your Bigpipe connection with these specific models of modem. If something goes wrong during setup we recommend doing a factory reset of your modem and – if necessary – getting in touch with the Bigpipe support team. These guides don't cover everything your modem can do. If you want to get more in-depth, we recommend starting with Googling your modem model number.

Resetting the Router

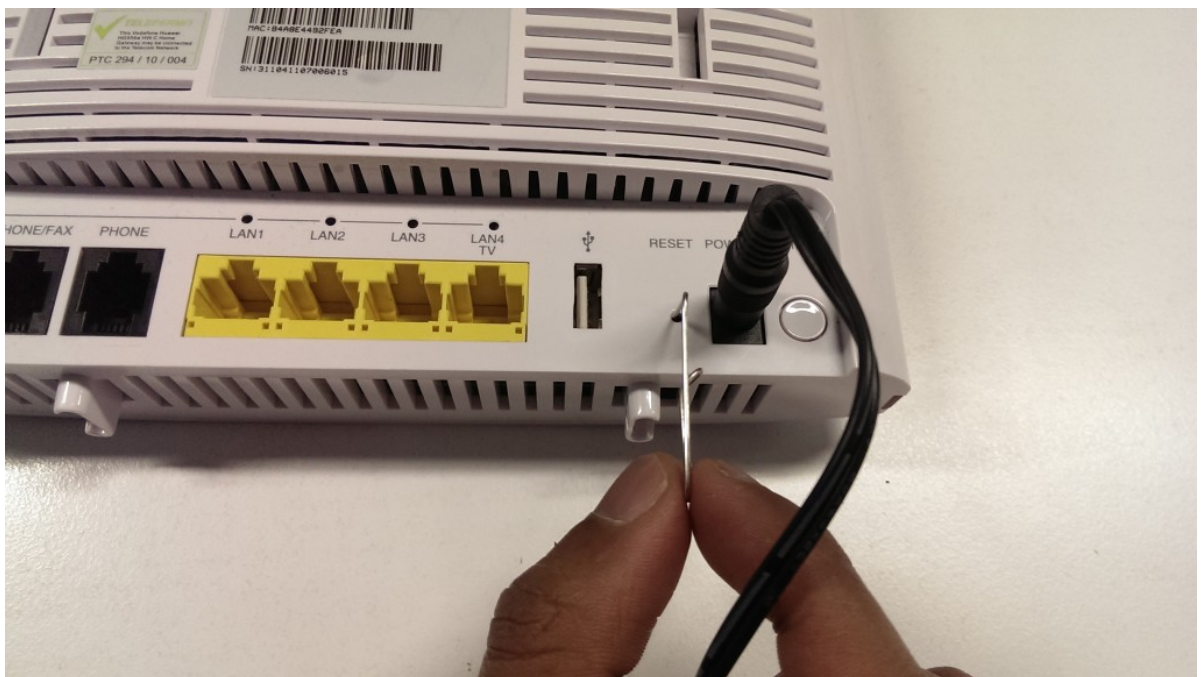
If something goes wrong with your router, you can reset the device to the default Factory settings. You will lose any of your customised settings.

To reset the modem:

1. Check it is on (i.e.: plugged in with one or more lights lit).

You cannot reset the modem if it is off.

2. Use something, like a paperclip, to press and hold the **Factory Reset** button, which is in between the plug and the USB port.



3. Hold for 5 seconds.
4. Release the **Factory Reset** button.
5. After a few seconds, the modem will start to reset.
The modem will have reset itself to its original factory settings. Any customised settings will have been lost.